

Recombinant KLK3/Kallikrein 3 Monoclonal Antibody

catalog number: AN300053P

Note: Centrifuge before opening to ensure complete recovery of vial contents.

Description

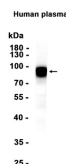
Reactivity	Human
Immunogen	Recombinant Human KLK3 / Kallikrein 3 protein
Host	Rabbit
Isotype	IgG
Clone	A1163
Purification	Protein A
Buffer	0.2 µm filtered solution in PBS

Applications

Recommended Dilution

WB: 1:1000-1:5000; IHC-P: 1:50-1:100

Data



Western blot analysis of extracts from Human plasma tissue at 1:1000.

Observed-MW:80 kDa

Calculated-MW:71 kDa

Preparation & Storage

Storage	Store at -20°C Valid for 12 months. Avoid freeze / thaw cycles.
Shipping	Ice bag

Background

This gene encodes a glycoprotein that participates in the surface-dependent activation of blood coagulation, fibrinolysis, kinin generation and inflammation. The encoded preproprotein present in plasma as a non-covalent complex with high molecular weight kininogen undergoes proteolytic processing mediated by activated coagulation factor XII to generate a disulfide-linked, heterodimeric serine protease comprised of heavy and light chains. Certain mutations in this gene cause prekallikrein deficiency. Alternative splicing results in multiple transcript variants encoding different isoforms. [provided by RefSeq, Jan 2016]

For Research Use Only

Toll-free: 1-888-852-8623
Web: www.elabscience.com

Tel: 1-832-243-6086
Email: techsupport@elabscience.com

Fax: 1-832-243-6017